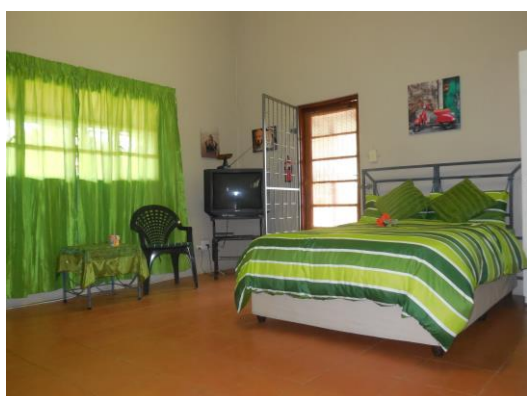


CONTACT Reservations: Louis on 084 213 8990

The Rose Room **Bed & Breakfast basket**

The Rose Room is a cozy room up at the stable block that has a small front garden. It sleeps a couple; being fitted with a double bed. There is a small bathroom with a shower. It has a fridge & microwave for your convenience. Braai and lapa facilities are nearby. The room has a television with SABC1, 2, 3 & E TV. Uncovered but secure parking.



Rose Room

Daily rate	ZAR
Sleeps maximum 2	
1 Adult per night (Rose Room)	R 400
2 persons sharing (Rose Room)	R 500
Complimentary breakfast basket included in rate	R 0

The Rose & Stallion Unit **Bed & Breakfast basket**

The Rose & Stallion Unit is a cozy 2 room up at the stable block that has a small front garden. The first room sleeps a couple; being fitted with a double bed. There is a small bathroom with a shower. It has a fridge & microwave for your convenience. Braai and lapa facilities are nearby. The room has a television with SABC1, 2, 3 & E TV. Attached is the Stallion room which has 1 double bed, 2 single beds with a separate toilet. The 2 rooms form an ideal family unit. Uncovered but secure parking.



Rose & Stallion 1

Daily rate	ZAR
Sleeps maximum 2	
Rose & Stallion Unit (2 attached rooms)	R 850
Complimentary breakfast basket included in rate	R 0

Please note we have many restaurants in very close proximity to us – within 2 km.

Also many Takeaways deliver to us.

CONTACT DETAILS

Broadlands Equestrian Centre & Stud Farm
 Aloes Street, Off Veldspaat Road
 Polokwane
 Limpopo (Northern) Province
 South Africa

Our GPS Co-Ordinates

23 degrees 52' 27.49" S
 29 degrees 29' 20.16" E

Contact : Louis (9 am – 5 pm)
 Fax (1) : 086-667-4005
 Local Fax (2) : 086-667-4005
 INT Fax (2) : +27-86-667-4005

Cell (1) : 084 213 8990
Cell (2) : 082 715 1627
Cell (3) : 082 570 1589
E-mail (1): horses@broadlandshorses.co.za

DIRECTIONS to Broadlands Equestria Guest Farm

As you come in on the N1, on the outskirts of Polokwane, just after the Shell Ultra City Petrol Garage, take the N1 Louis Trichardt (**R71 Tzaneen**) **bypass on your left hand side**. Go through one major robot intersection, one big four way stop, and you will pass the new Peter Mokaba stadium on your left. At the next major robot intersection you are at the R71 road, you will go over the R71 robot intersection and turn left at the N1 (T) Louis Trichardt, (R81 Giyani) Road marker before the bridge. Keep left on the road to the R81. Do not go right on the N1 freeway bypass to the Louis Trichardt road. This is the new bypass that will bring you to the R81 Polokwane-Giyani **Munnik Avenue** road marker. Turn left into Munnik Avenue (R81) and travel in the Polokwane direction. You will pass Broadlands Estate entrance on your right and Thornhill Shopping Centre on your left. At the next big robot intersection, with Thornhill Shopping Centre on your left, turn right into Veldspaat Road. Road marker says VELDSAPAAT, Magna Via. (You will see a sign board indication that this is also the way to the airport which is 5 minutes away). Stay on Veldspaat Road; pass Woodlands on your right and the new Excel Garage with Steers and Nando's on your left. Go through Woodlands circle & continue for about 1 km. Turn right onto new **Aloes Street** new road **to Broadlands Equestrian Centre and the new Aloes Development**. (Big sign boards) on Veldspaat Road. Drive along new road and at the second turning circle you will see Broadlands Equestrian Centre on your left hand side .You will come to a big **GREEN** entrance gate.

After 18h00 we lock the main gate. If you arrive after 18h00, please call our **Night watchman on 076 680 5737** to open gate manually. He will show you to your unit.